



St.Petersburg State University

Research Park

Priority Areas



Nanotechnology
and Materials Science
(14 resource centers)

Biomedicine and
Human Health
(6 resource centers)



26
Resource
Centers

Information Systems
and Technology
(3 resource centers)

Ecology and Nature
Management
(3 resource centers)

Center of Collective Sharing



Equal and fair access to:

1. research equipment
2. software

Wide range of users:

1. SPbU faculty members
2. SPbU students and postgraduate students
3. other interested parties (external users)

Assistance in commercialization of the research results

Современная исследовательская инфраструктура Российской Федерации
открытость, доступность, инновационность

НОВОСТИ :: ЦКП :: УНУ :: ДОКУМЕНТЫ :: ОБЩЕНИЕ :: ОТКРЫТЫЕ ДАННЫЕ :: БИБЛИОТЕКА :: КОНТАКТЫ :: Поиск

КАТАЛОГ ЦКП · КАТАЛОГ ОБОРУДОВАНИЯ · КАТАЛОГ УСЛУГ

ЦЕНТРЫ КОЛЛЕКТИВНОГО ПОЛЬЗОВАНИЯ

[к списку](#) **ПОСЛЕДНИЕ НОВОСТИ** [ВСЕ НОВОСТИ](#)

- Информационный бюллетень Национальной контактной точки "Исследовательские инфраструктуры"
- Ликвидирован ЦКП «Суперкомпьютер ВятГУ»

ЦКП - Научный парк СПбГУ (ЦКП - Научный парк)

ЦКП создан в 2013 году



SPbU Research Park Statistics

Total area 30 000 sq.m.

Two main locations:

- Peterhof campus – 20 sites
- City campus – 6 sites



SPbU Research Park Statistics

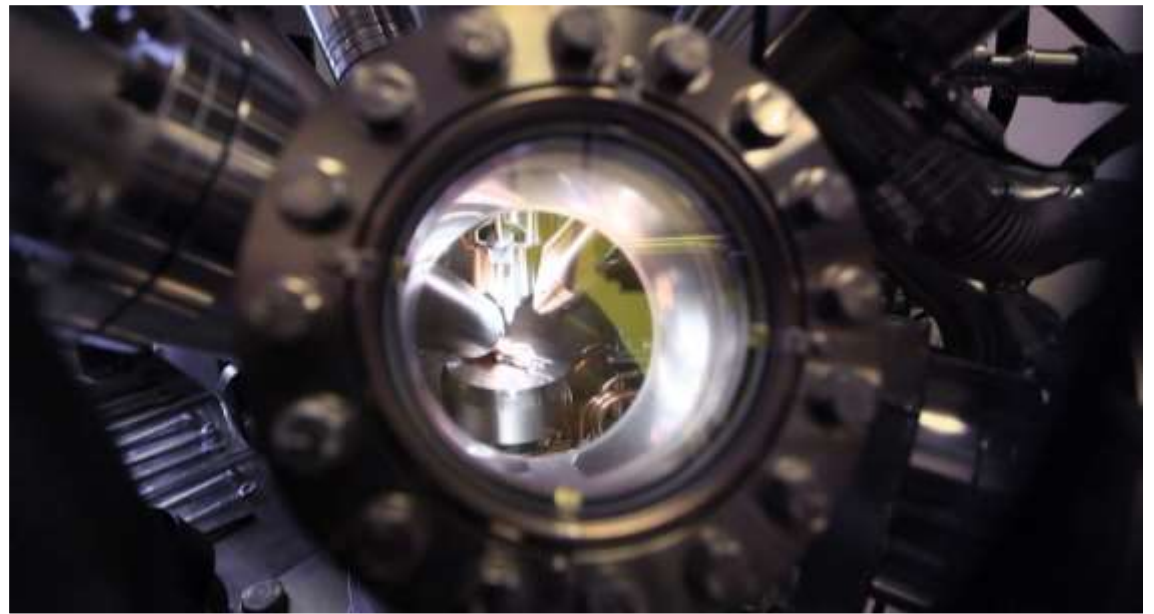


Total equipment costs

7 billion rubles

The number of high-tech complexes
with cost value more than 5 million rubles

more than 100



SPbU Research Park Statistics



Certified personnel	300 persons
including staff members with science degree	60 persons

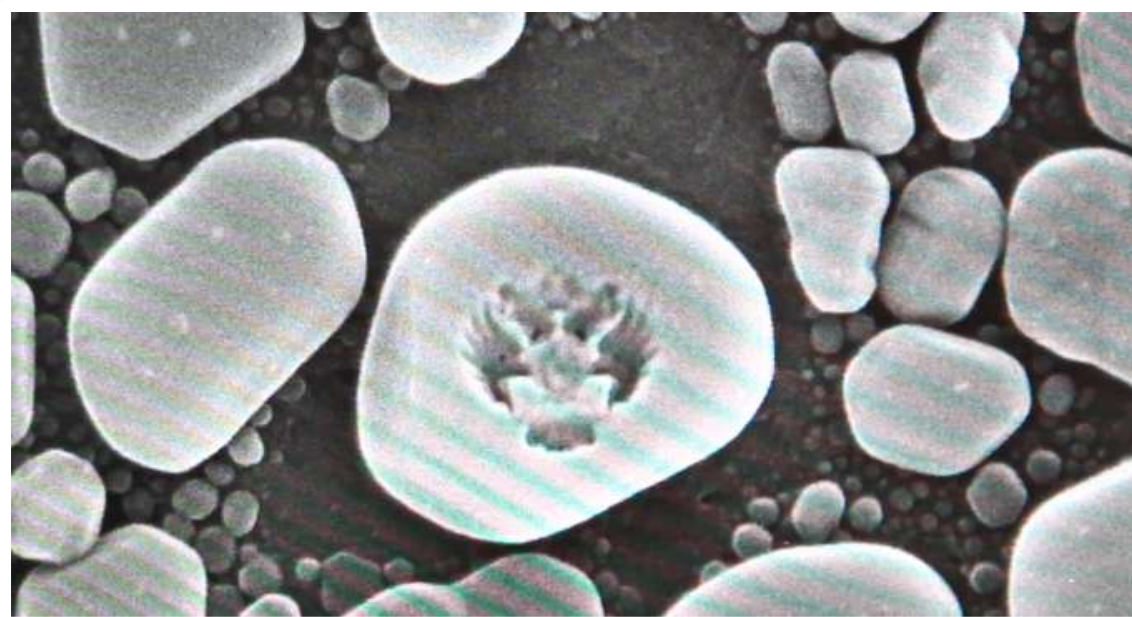


SPbU Research Park Statistics



The number of registered users **3 800**

The number of projects **5 000**





SPbU Research Park Statistics

2016

The number of student graduation work projects	1 183 projects
The main educational programs	1 000 students
The supplementary educational programs	300 participants



SPbU Research Park Statistics

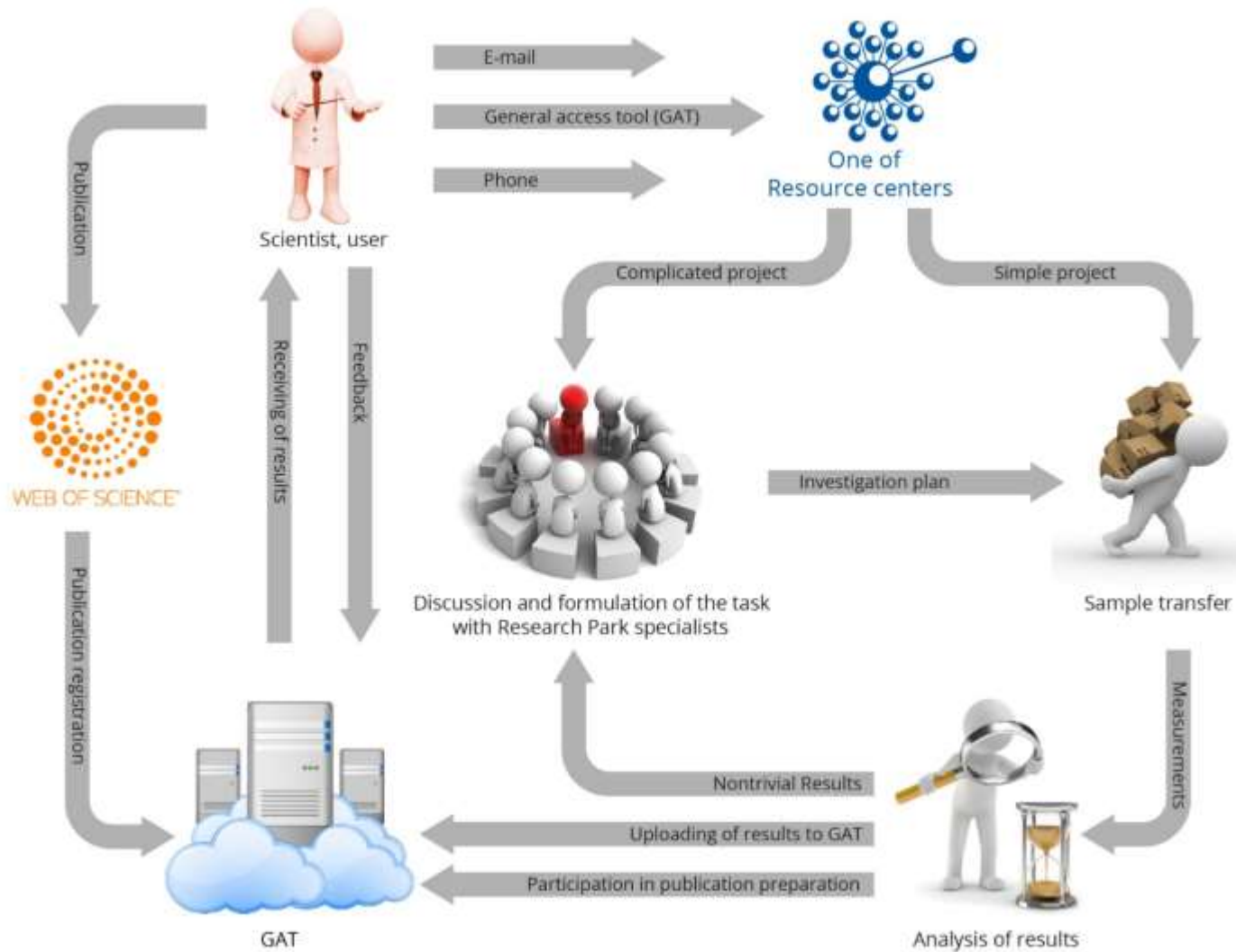


The number of publications in 2016 **2 100**

Including peer-reviewed publications
indexed in WoS/Scopus **550**



Workflow Diagram



General Access Tool



- Remote submission of projects
- Monitoring of the request fulfilment at all stages
- Remote access to the results



Научный парк СПбГУ 

Вход в систему

Логин

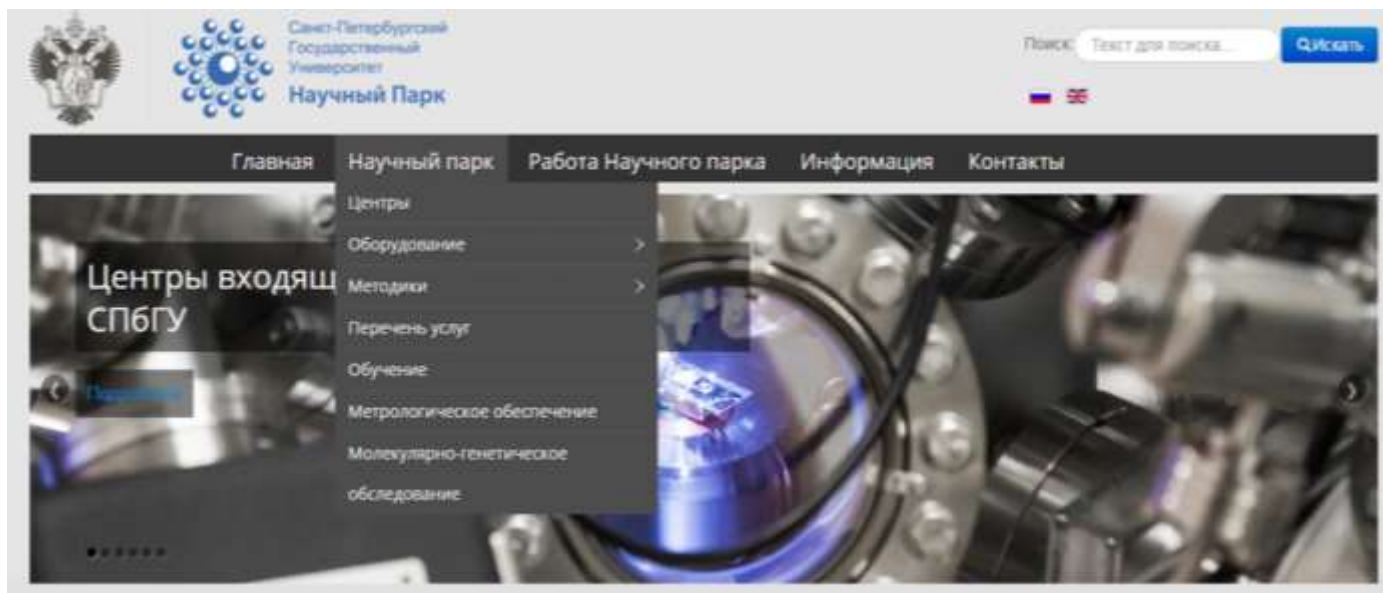
Пароль

GAT web link: <http://client.researchpark.spbu.ru/>



Research Park web portal

1. Available equipment.
2. Available research methods.
3. General access tool.
4. Current regulatory documents and promotional materials.
5. Contact information .



Web portal link: <http://researchpark.spbu.ru/>